



SENSORWORX®

**DIGITAL
CONTROLS**

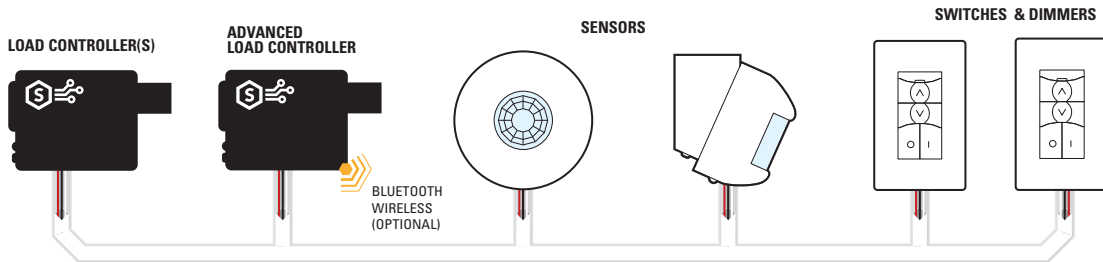
— SIMPLER —



WHY DIGITAL? WHY **SENSORWORX** DIGITAL?

WIRING ...SIMPLER!

FEATURES:	BENEFITS:
Topology Free Data Line Architecture	More fool proof wiring, less rigid layout/install requirements, easier to add devices
18/3 Cable Used for Data Line	Eliminates Issues that plague CAT-5 Systems (wrong pin-out, poor RJ-45 port connections, more \$\$)
Wire Nut, Push Nut, & Lever Nut (WAGO™) Friendly	No special RJ45 termination tools or data cable skills required



ZONE CONFIGURATION ...SIMPLER!

FEATURES:	BENEFITS:
A. Default Zone Operation	Out-of-the-box control provides instant wiring validation for installer
B. Push-To-Pair Capable	Allows direct linking of load controllers to remote devices (~3 seconds per device)
C. Ladderless Pairing via Mobile App	Most efficient & intuitive setup method (requires a SWX-940 on data line)

A

OUT-OF-THE-BOX

- All devices on common data line communicate by default
- If a load controller is not paired to anything, it listens to everything



C

MOBILE APP

- Enables ladderless zone configuration
- Pulls in any prior pairing done via push-to-pair process

iOS App Store



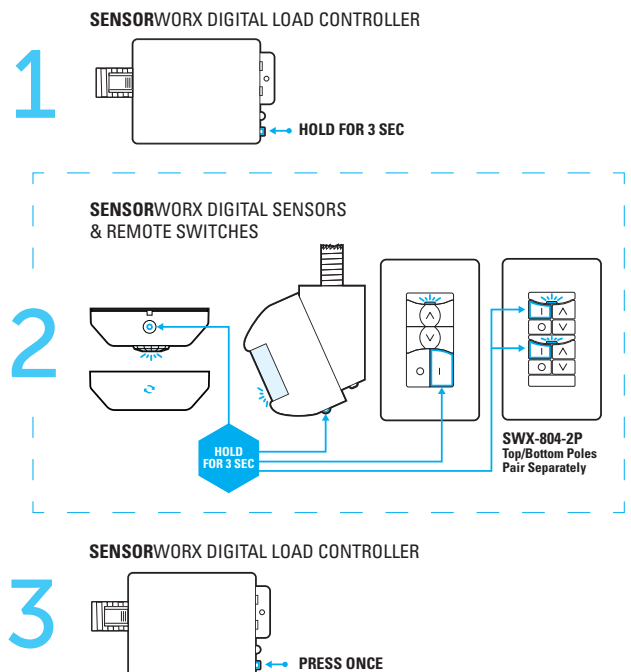
Google Play Store



B

PUSH-TO-PAIR

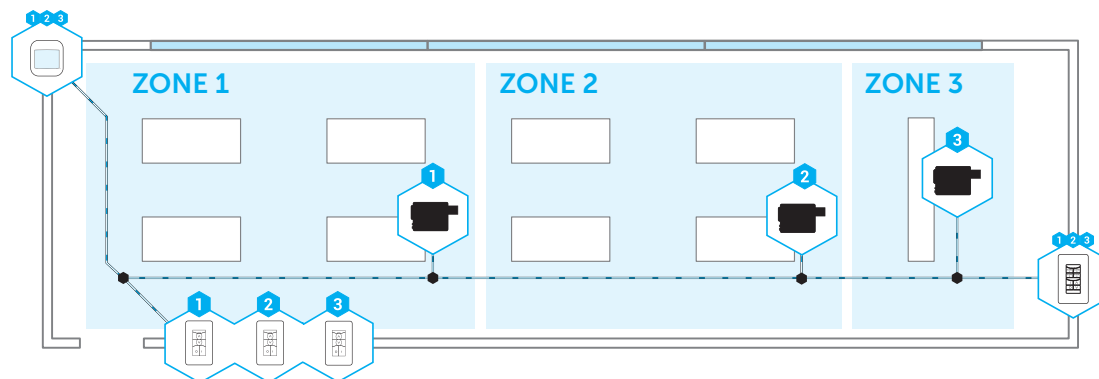
- Used to configure multi-zone rooms by hand
- Easy process, requires ~3 secs per device





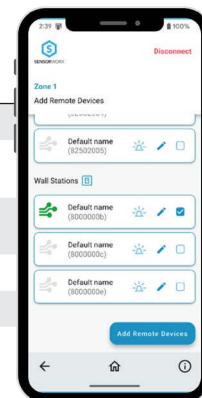
MULTI-ZONE ROOMS ...SIMPLER!

FEATURES	BENEFITS
Individually addressable devices	Enables sophisticated multi-zone rooms
Event driven architecture & communication	Delays with large zones are eliminated by not using polling or command response
Unlimited devices per room (digital data line)	Devices are directly assigned to zones via digital address, not via a limited number of switch, occupancy, or photocell channels
Independent daylight operation per load controller	Enables multi-daylight zone architectures

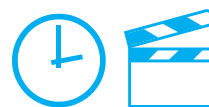


MOBILE APP ...SIMPLER!

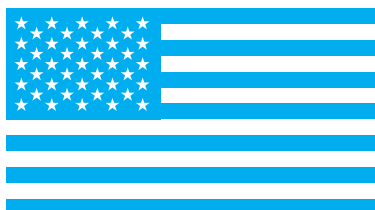
FEATURES	BENEFITS
No additional hardware required to connect	Access for mobile app is added via an option on existing load controller in space
Not required for simple zone/device configuration	Most configuration settings (pairing, sequence of operation, dimming) can be changed via local device push-button
Required only for advanced zone/device configuration	Ladderless zone configuration and/or advanced configuration tasks (i.e. scene & schedule creation) require mobile app
Easy to create "as-built" documentation	Email, text, or print zone detail reports directly from mobile app
Same mobile app as used for wireless systems	Users only need to learn one user interface



SCENES & SCHEDULES ...SIMPLER!



FEATURES	BENEFITS
Each digital zone can run 8 scenes and 10 schedules	Light level scenes can be created & run via digital scene controller or mobile app. Only scenes that modify zone operation require mobile app to create
Only one load controller per room requires advanced option to add time clock for all connected devices on data line	Eliminates material and labor expense of adding additional devices just for time-based control
Clock is located within each room and only added when application requires time-based control	Makes network backbone optional, which can be overkill for small/medium size buildings
Scenes are stored locally on each load controller	Eliminates potential for backbone/network issues affecting local scenes/schedules



MADE IN USA ...BETTER!

BENEFITS
Shorter lead times
Directly monitored quality
More cost effective supply chains
USA-based support team to assist w/ designs & questions

SYSTEM DESIGN & PRODUCT SELECTION ...SIMPLER!

A

START BY CHOOSING A LOAD CONTROLLER



LOAD CONTROLLERS
SWD-900/940 SERIES

DIGITAL LOAD CONTROLLER PACKS

SWITCHES AND DIMS FULL CIRCUITS OF LIGHTING & PLUG LOADS

Model #	Description
SWD-900	Digital Load Controller Pack - 16A, 120-277 VAC
SWD-900-D1(D2)	Digital Load Controller Pack - 16A, 120-277 VAC, w/ 0-10V Class 1(or Class 2) Dimming
- EM Option*	UL924 Emergency Operation <i>(*Consult sales for release status)</i>
Model #	Description
SWD-940-D1(D2)	Advanced Digital Load Controller Pack w/ 0-10V Class 1(or Class 2) Dimming, 16A, 120-277 VAC. Adds timeclock & mobile app. for all connected devices.
SWD-970-D1(D2)*	Hybrid Advanced Digital + Wireless Load Controller w/ 0-10V Class 1(or Class 2) Dimming 16A, 120-277 VAC <i>(*Consult sales for release status)</i>
- IN Option*	Contact Closure Input <i>(*Consult sales for release status)</i>
Model #	Description
SWD-900-PL*	Digital Plug Load Controller, 120 VAC, 20A <i>(*Consult sales for release date)</i>

B

ADD THE SENSOR(S) NEEDED FOR THE SPACE

- Digital Passive Infrared (PIR) Motion Detection
- Added Passive Acoustic Detection (i.e. Dual Tech) Optional
- 360° Ceiling, 120° Wide View, & Hallway PIR Coverage Patterns
- Compact Size & Matte White (Standard) or Black (Optional) Finish



CEILING SENSOR
SWD-200 SERIES



WIDEVIEW /
HALLWAY SENSOR
SWD-400 SERIES



DAYLIGHT HARVESTING
PHOTOCELL
SWD-250 SERIES

DIGITAL OCCUPANCY & PHOTOCELL SENSORS

PIR OR DUAL TECH. (PIR + ACOUSTIC) DETECTION

- Included Mounting Nipple Attachment with Integrated Hole Saw
- Multiple Contractor Friendly Mounting Methods
- Convenient Test Mode and Adjustable Time Delays
- Optional Daylight Harvesting Photocell

Model #	Description	Detection
SWD-201	Digital Small Motion 360° Ceiling Sensor	PIR
SWD-202	Digital Large Motion 360° Ceiling Sensor	PIR
SWD-203	Digital High Bay 360° Ceiling Sensor	PIR
SWD-211	Digital Small Motion 360° Ceiling Sensor	PIR & Photocell
SWD-212	Digital Large Motion 360° Ceiling Sensor	PIR & Photocell
SWD-221	Digital Small Motion 360° Ceiling Sensor	Dual Tech
SWD-222	Digital Large Motion 360° Ceiling Sensor	Dual Tech
SWD-231	Digital Small Motion 360° Ceiling Sensor	Dual Tech & Photocell
SWD-232	Digital Large Motion 360° Ceiling Sensor	Dual Tech & Photocell
SWD-250	Digital Daylight Harvesting Photocell	Photocell
SWD-401	Digital Wide View Sensor, Corner/Wall/Ceiling Mount	PIR
SWD-402	Digital Hallway Sensor, Corner/Wall/Ceiling Mount	PIR
SWD-421	Digital Wide View Sensor, Corner/Wall/Ceiling Mount	Dual Tech
-AR Option*	Auxiliary Low Voltage Relay Output <i>(*Consult sales for release status)</i>	

C

FINISH WITH REMOTE SWITCH OR DIMMER



SWITCH & DIMMERS

SWD-804

SWD-802

SWD-804-4S

SWD-804-2P



DIGITAL WALL STATIONS

INTUITIVE OPERATION & EASY-TAP BUTTONS

These stylish wall stations make multi-way switching and dimming applications a snap.

- Less than 1" Depth in Wall Box
- Available in White (WH), Ivory (IV), Light Almond (LA), Black (BK), & Red (RD)

Model #	Description
SWD-802-xx	Digital 1-Zone On/Off Wall Station, <xx = color>
SWD-804-xx	Digital 1-Zone Dimmer Wall Station (On/Off/Raise/Lower), <xx = color>
SWD-802-2P-xx	Digital 2-Zone On/Off Wall Station, <xx = color>
SWD-804-2P-xx	Digital 2-Zone Dimmer Wall Station (On/Off/Raise/Lower), <xx = color>
SWD-804-4S-xx	Digital 4-Scene Selector & Dimmer Wall Station, <xx = color>



09/08/2025